

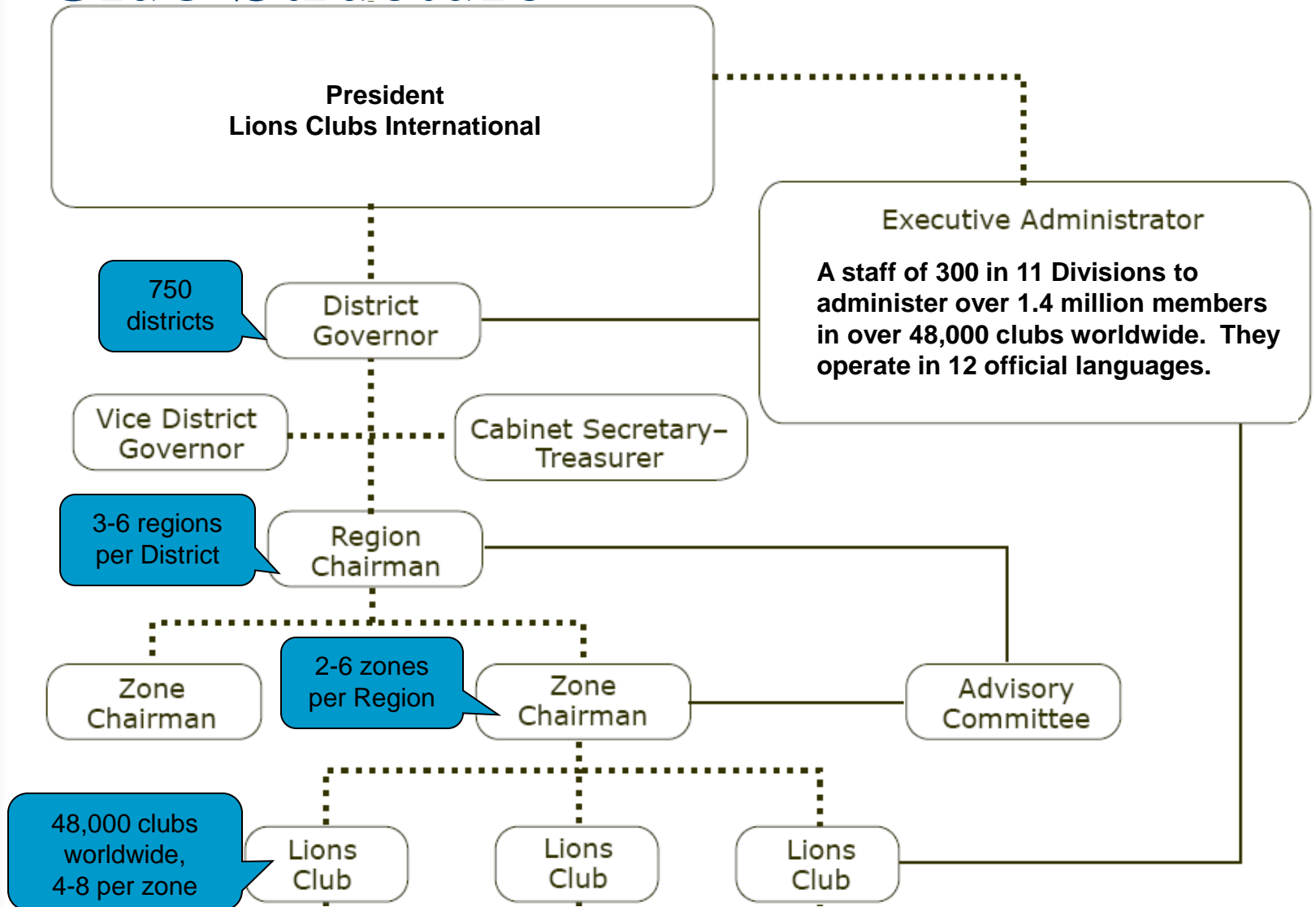
Lions Clubs International

Club Organizational Chart



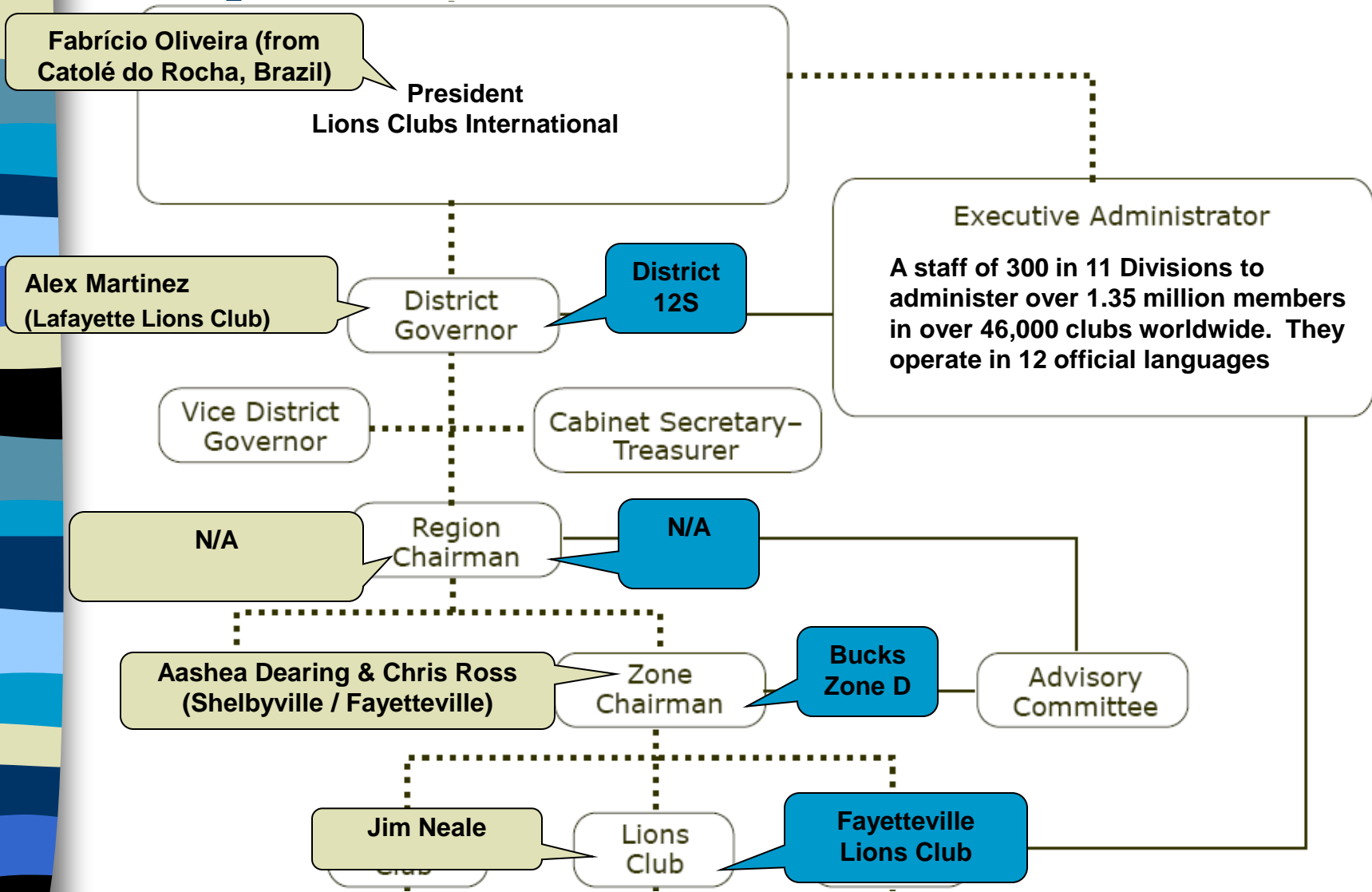
Fayetteville Lions Club
Year 2024-2025

Lions International Club Structure



Lions Club Structure

-Fayetteville Point of View





District 12S Organization

Pioneers (Zone A): Becky Hix

Gallatin
Hartsville
Hendersonville
Jackson County
Lafayette Lions
Lafayette Lioness Lions
Millersville
Portland
Red Boiling Springs
Springfield
Westmoreland
White House

Phoenix (Zone B): Lana Loham

Alexandria
Carthage
Gladeville
Lebanon
Lebanon Noon
Mt Juliet West Wilson
Smithville
Southside
Watertown

Blue Raiders (Zone C): Kat

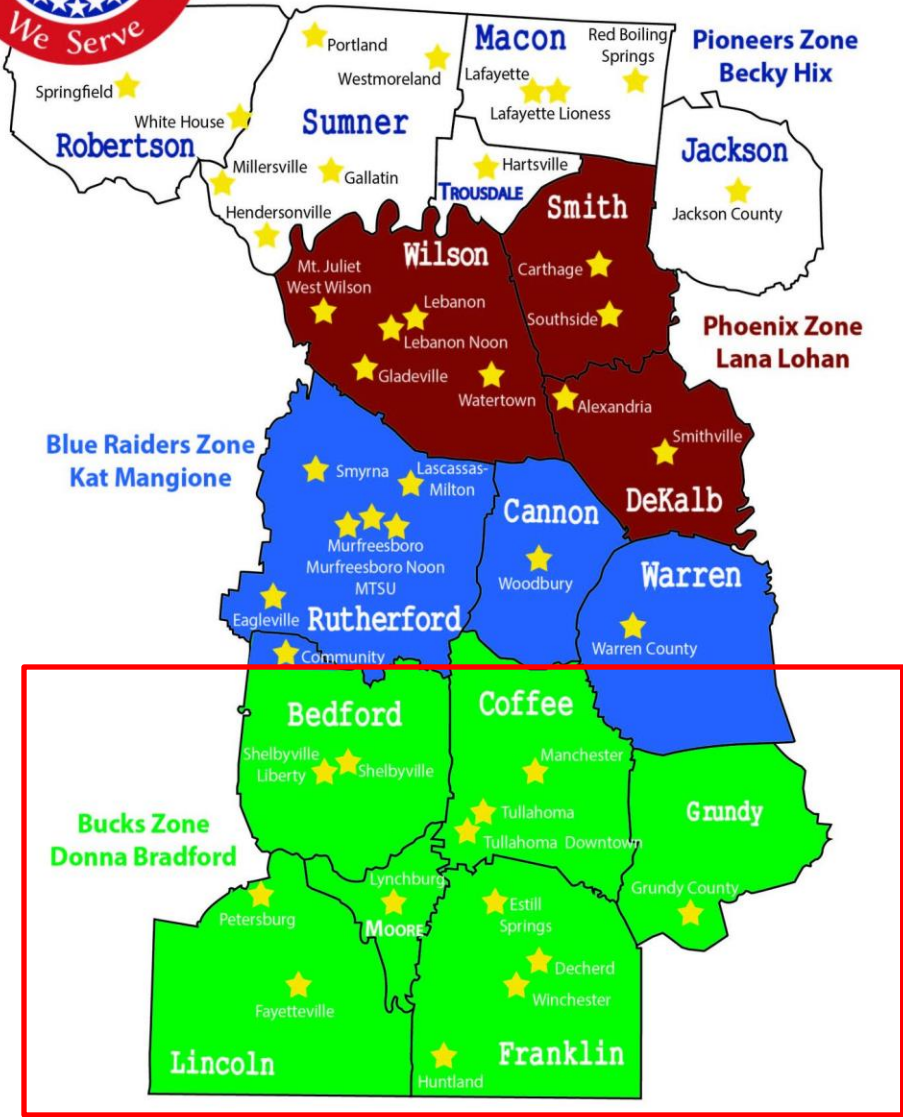
Mangione-Swoape
Community
Eagleville
Lascassas & Milton
MTSU Campus
Murfreesboro
Murfreesboro Noon
Smyrna
Warren County
Woodbury

The Bucks (Zone D): Ashea Dearing and Chris Ross

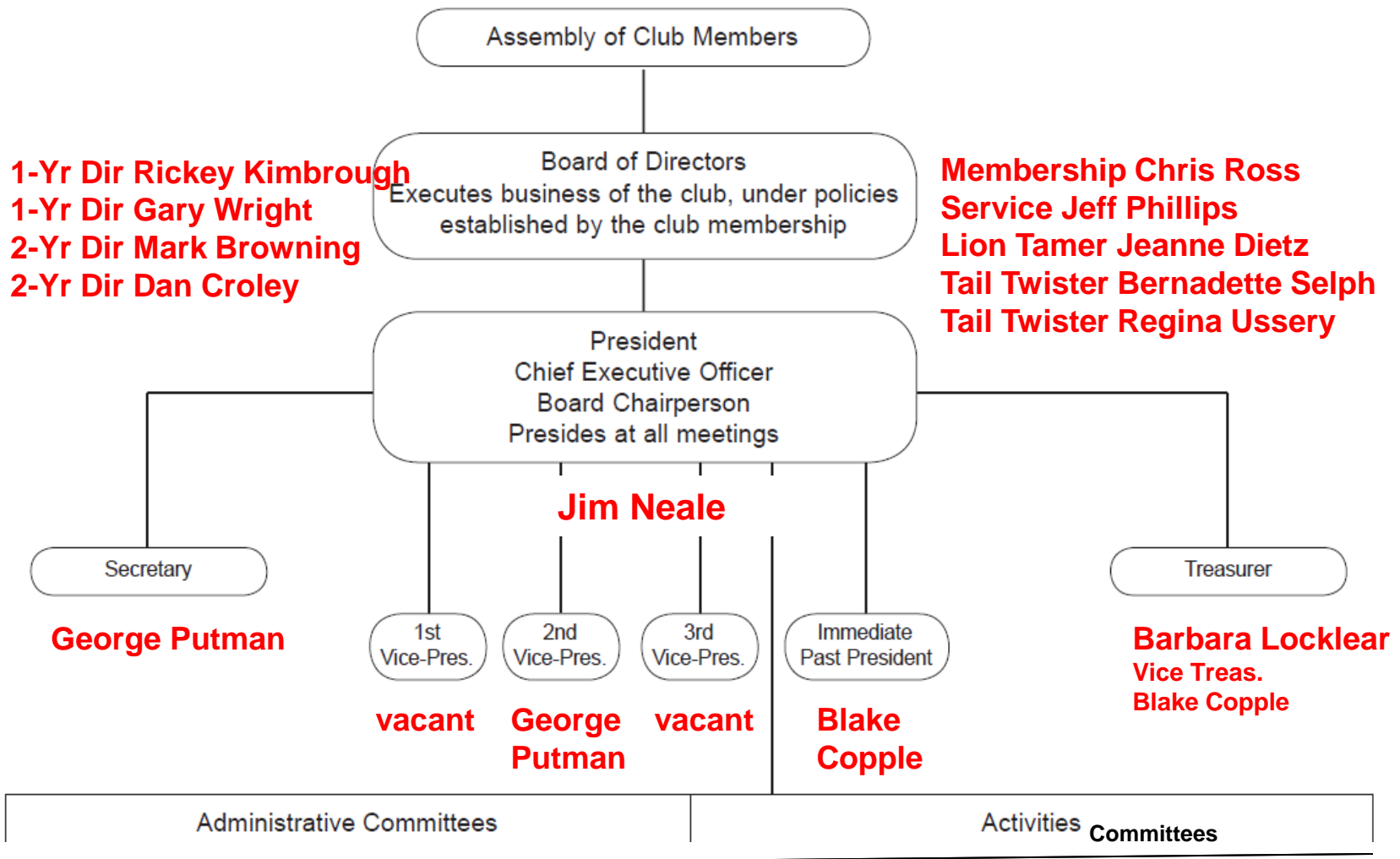
Decherd
Estill Springs
Fayetteville
Huntland
Grundy County
Lynchburg
Manchester
Petersburg
Shelbyville
Shelbyville Liberty
Tullahoma
Tullahoma Downtown
Winchester



DISTRICT 12-S ZONES 2024-2025



Standard Club Organization



Fayetteville Club Committees



Administrative Committees

| | | | | | | |
|------------------|--------------------------------|---------------------|---------------------|--------------------------|---------------------|--------|
| Membership (GAT) | Public Relations & Information | Finance | Awards & Nomination | Melvin Jones | Programs (Speakers) | Ad Hoc |
| Leadership (GAT) | Banquet, Cookout & Meals | Historical & Museum | LCIF Coordination | Disaster Relief & Safety | Flowers & Care | |

Activities Committees

| | | | | | | |
|----------------------------|-----------------------------|---------------------------------|--------------------|--------------|------------------------|-------------------------|
| Football Jamboree | Basketball Tourney | Sports Program Ad Sales | Pecan Sales | Peace Poster | Drug Awareness Essay | Ad Hoc |
| Sight & Hearing Assistance | Sight & Hearing Screening | Leo Clubs | Youth Sponsorship | Scholarships | Era P Jones Projects | 2nd Chance Scholarships |
| Adopt-A-Highway | Recycle Printer Cart Phones | Recycle Eyeglasses Hearing Aids | Recycle Drink Tabs | Bingo | Service/Projects (GAT) | |